

150+ RESIDENCES IN THE WORLD

ThinkArchit Group



华中科技大学出版社
<http://www.hustpas.com>

A

Architecture Design
Jaime Varon, Abraham Metta, Alex Metta
/ Migdal Arquitectos

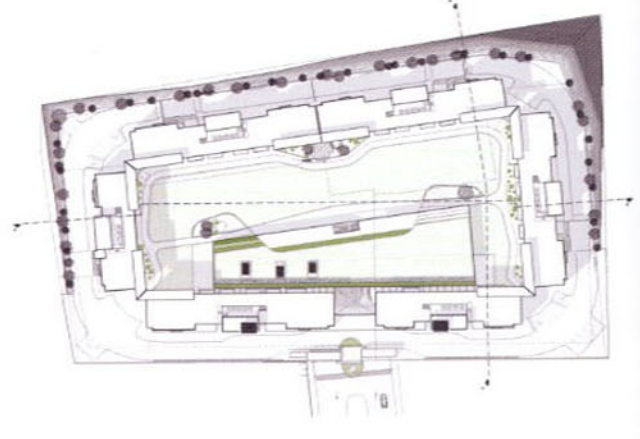
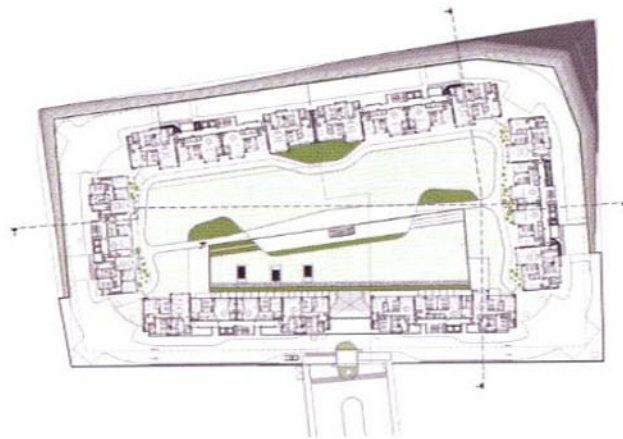
Project Architect
Jaime Varon, Abraham Metta, Alex
Metta / Migdal Arquitectos

Location
State of Mexico, Mexico

Area
61,400 m²

Photograph
Luis Gordo, Alex Girbel

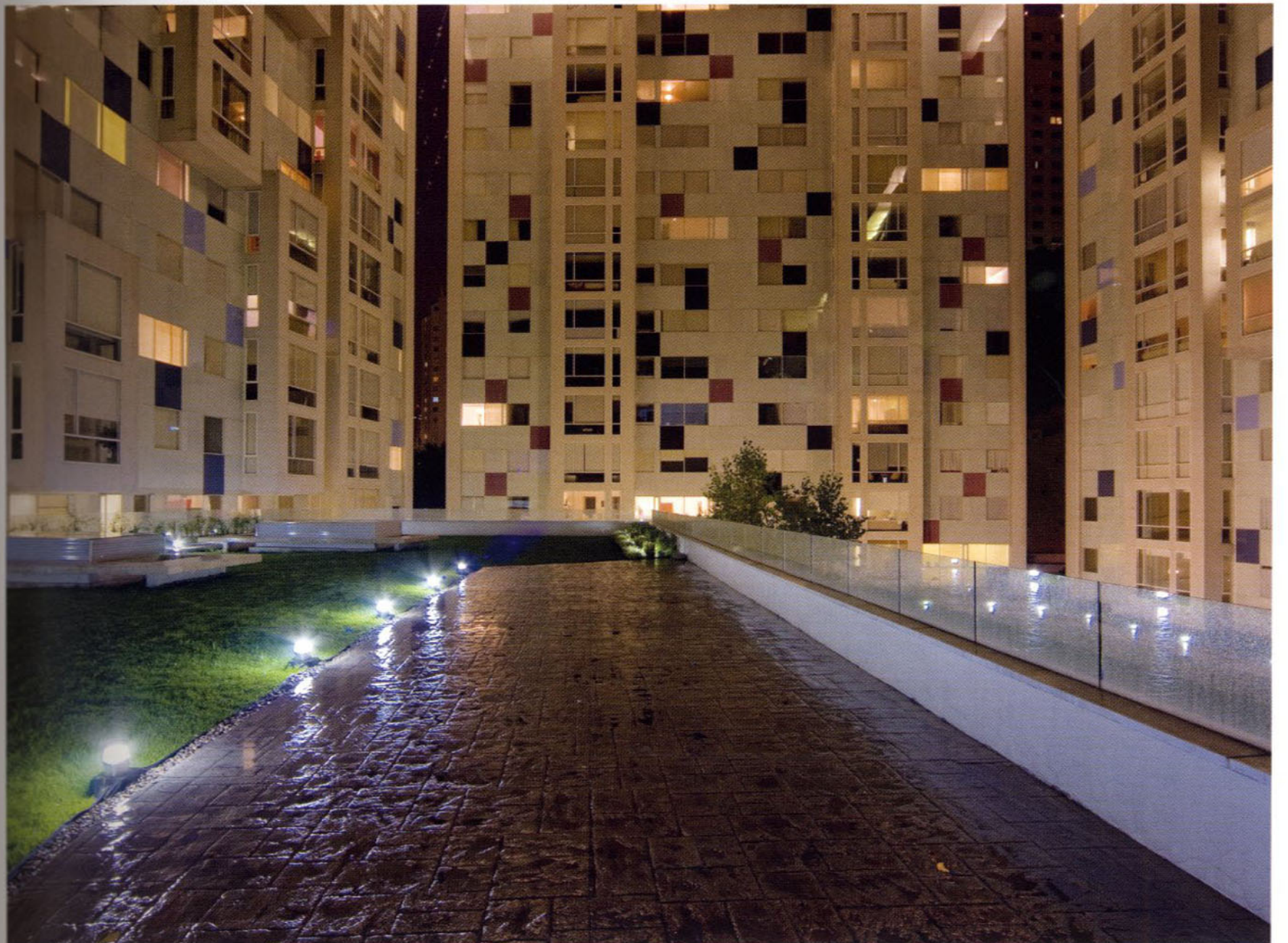
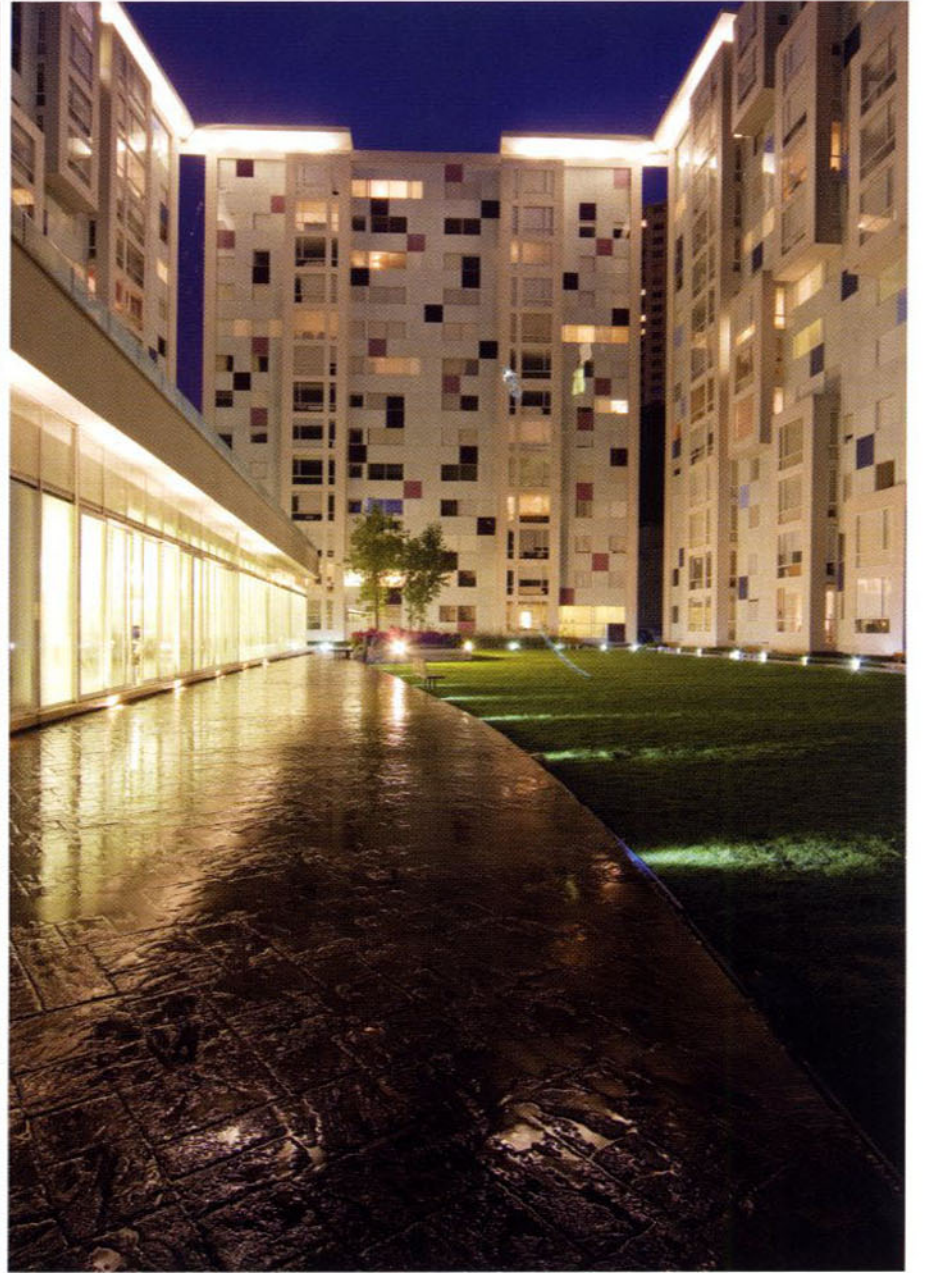
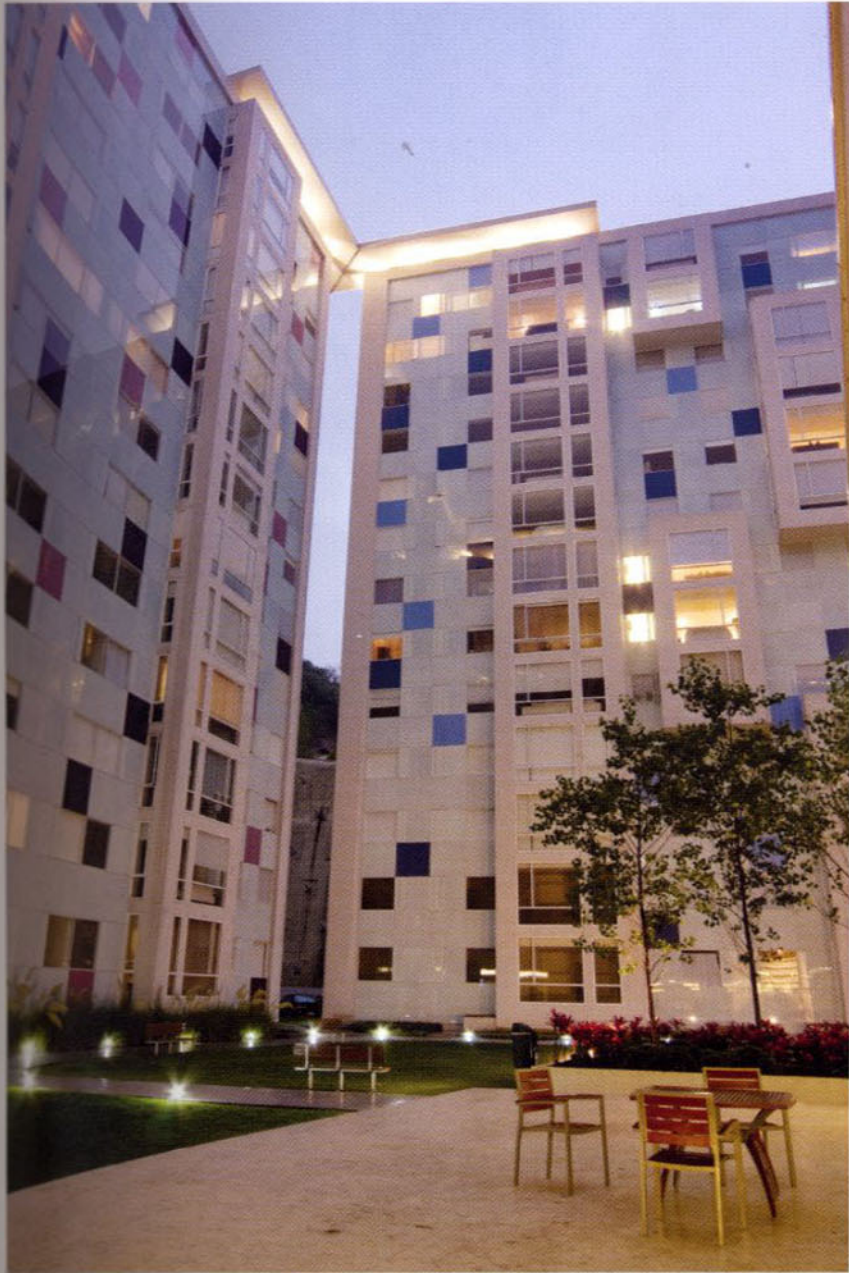
trio Interlomas



The concept of the development begins with the ideal of an "atrium", a large patio or courtyard of 8,700m², of common use, around which all the activities of the complex take place. The distances between towers are considerable, achieving a green area of 112m in the most spacious side.

The development stands out from the rest for its presence and colorfulness. It consists of six 13-storey towers covered in reticular skins of transparent white glass, and some other shades of blues and lilacs. Protruding elements in the public areas of the apartments give a sense of movement to the façades while permitting versatile perspectives from distinct points of the development.

The design of the architectural layout is resolved in such a way that all that apartments, ranging from 96 to 180m², have a privileged view of the interior garden, while distributing the services towards the slopes surrounding the development. Given the orientation and appropriate layout of the elements of the complex, the apartments and common areas enjoy adequate sun throughout the day.



P

Architecture Design
Jaime Varon, Abraham Metta, Alex Metta
/ Migdal Arquitectos

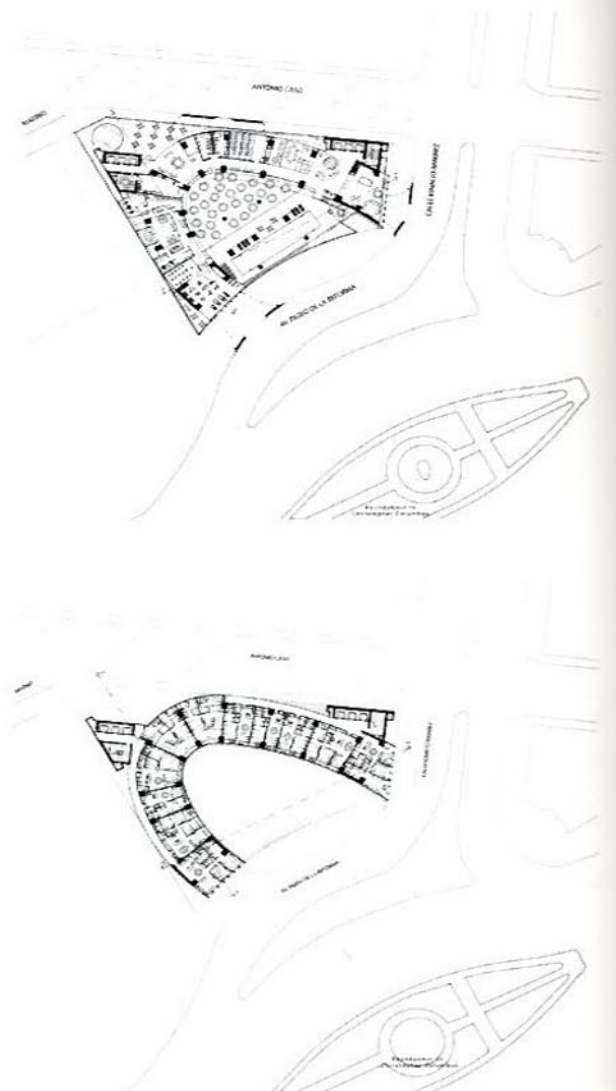
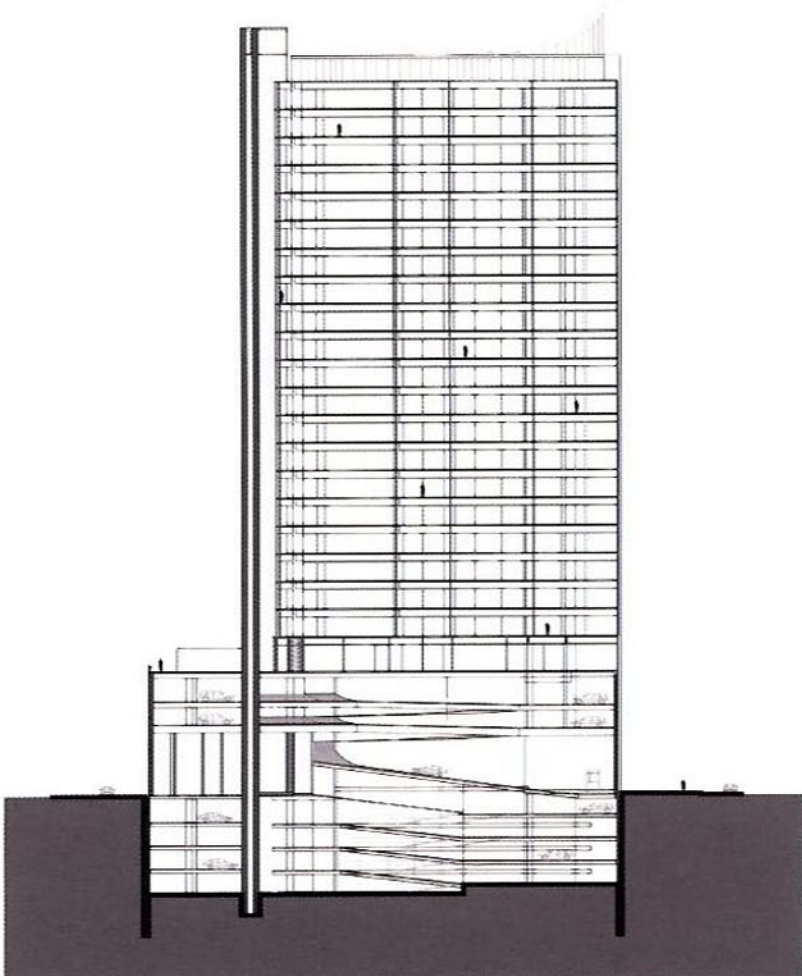
Project Architect
Jaime Varon, Abraham Metta, Alex
Metta / Migdal Arquitectos

Location
Mexico City, Mexico

Area
42,200 m²

Photograph
Ian Lizaranzu, Luis Gordón

Plaza Residences





The building is flanked by two cultural landmarks that enroot it with the historic past of the area, the Monument to Columbus and the Monument to the Revolution. The shape of the building gives richness and movement to the urban context. Plaza Residences becomes a sculptural object that acts as a showcase that defines the Monument to Columbus on one of the most slightly corners of Avenida Reforma.

In response to the Columbus traffic circle, the building, with its glass interior façade, is erected in the shape of a boomerang, creating a concave interior space that we give to the city by way of Reforma. This concave shape opens up and embraces the majestic traffic circle, integrating it into its concept. The boomerang shape draws out from a long linear element which constricts into the plot with the intention of presenting a considerable unfoldment of façade towards Reforma, making it possible to favor all the apartments with views towards the majestic avenue. The existing urban belt continues thanks to the basement of the building, which is presented as a continuous element with a collection of perforations. This stone pedestal gives presence to the first floors that accommodate common areas, commercial areas and services.

The building is an abstract entity giving a sense of scalelessness; its principal façade present itself as a smooth-skinned glass curtain, permitting, at a glance, the loss of perception of the building's floors. The building's skin is accentuated with randomly placed aluminum mullions, which control the effect of the sun, while creating an interesting effect of light and shadow in the concave shape.

The apartment tower is divided into two zones, both with independent access and lobbies. Each apartment is designed based on the position occupied thereby in the tower according to its orientation. The building has apartments and suites of between 60 and 170m², 4 basement parking lots, common areas for the apartments and a commercial ground floor.

Art is integrated into the Plaza Residences project by means of a raised mural plaza or "písal", which, apart from being a common plaza, also serves as a transition towards the exterior, further favoring visual contact towards the great avenue. The apartments are of single or double height.