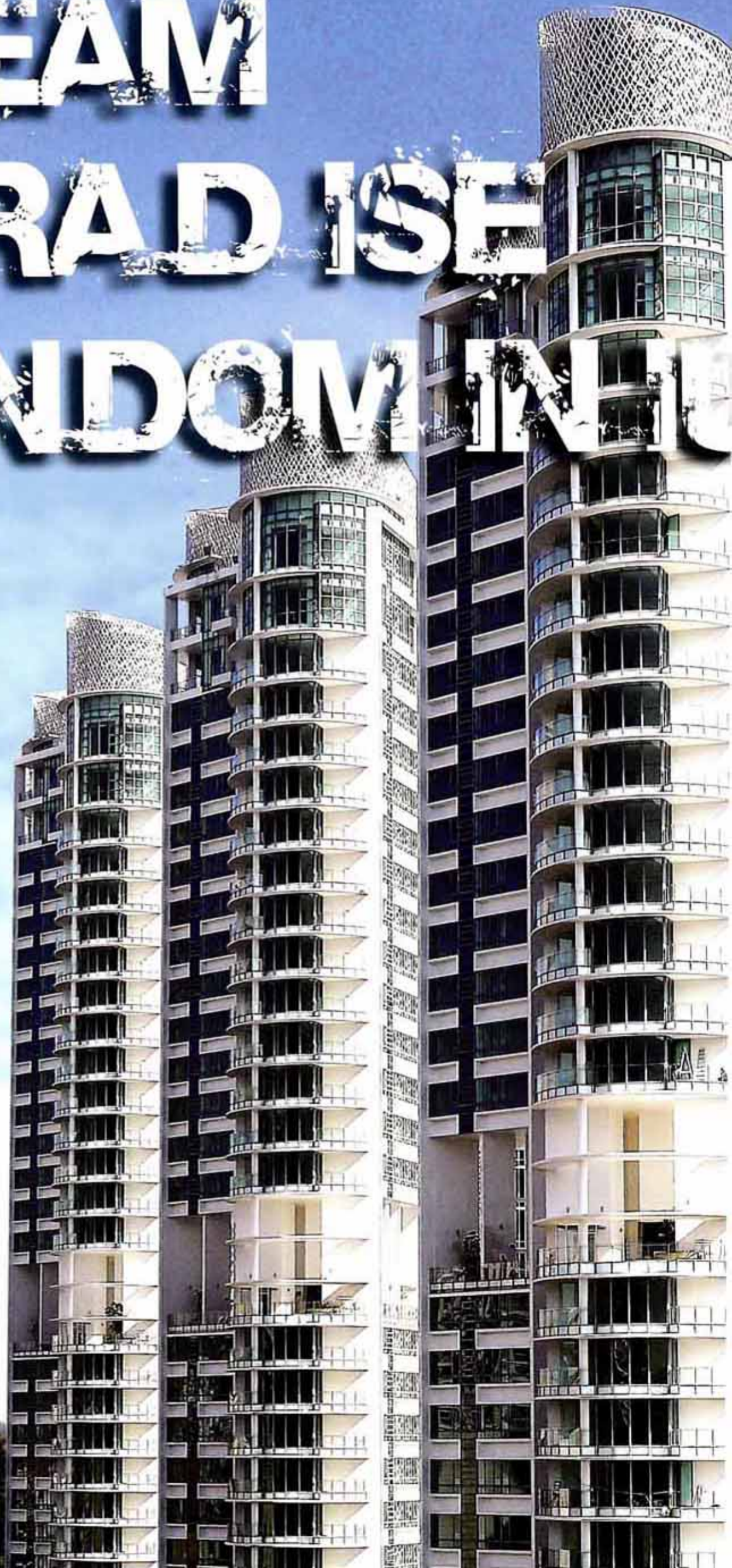


DREAM PARADISE CONDOMINIUMS



Plaza Residences

Projects Files

Architectural Design: Migdal Arquitectos

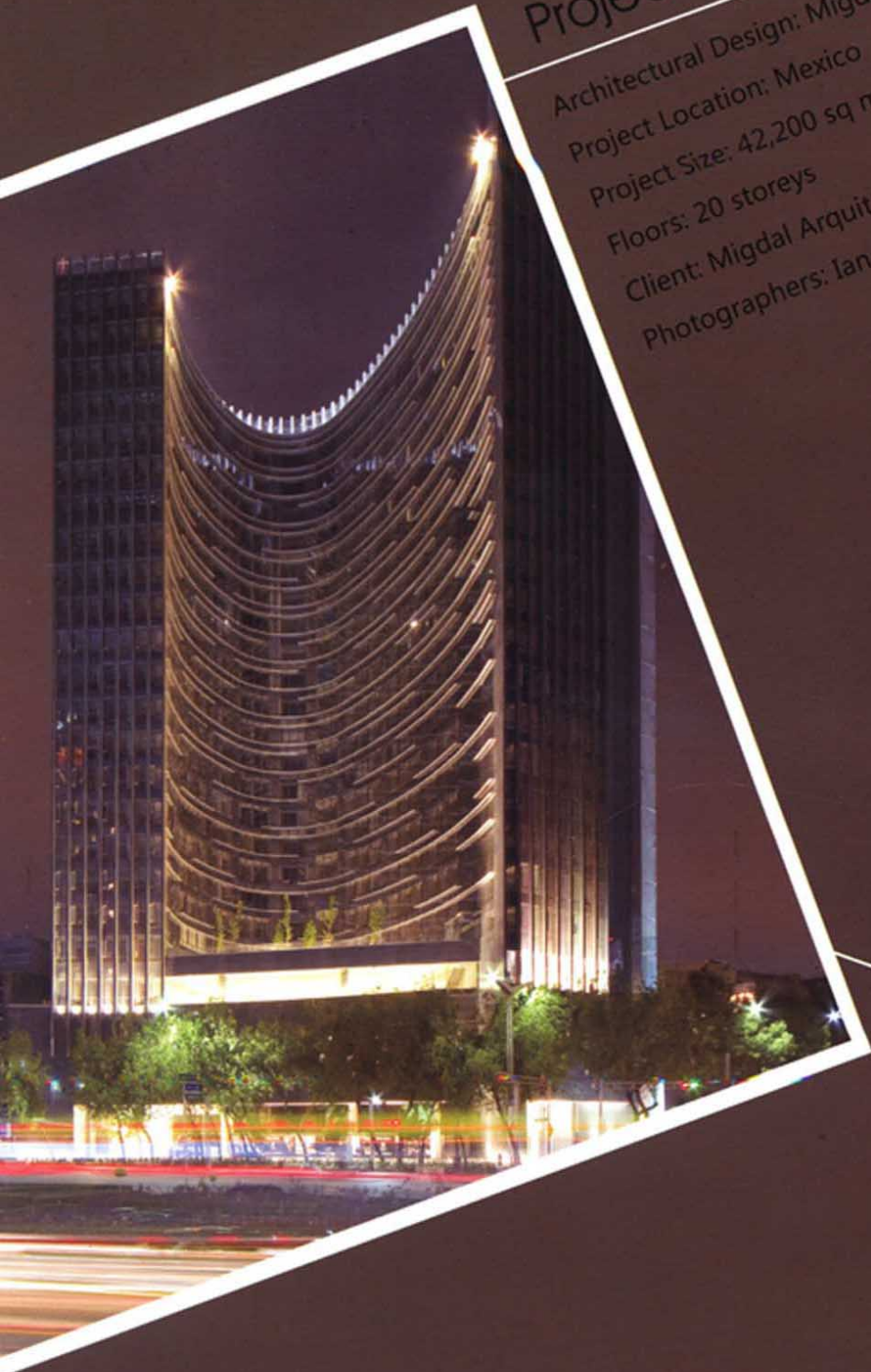
Project Location: Mexico

Project Size: 42,200 sq m

Floors: 20 storeys

Client: Migdal Arquitectos

Photographers: Ian Lizaranzu, Luis Gordo







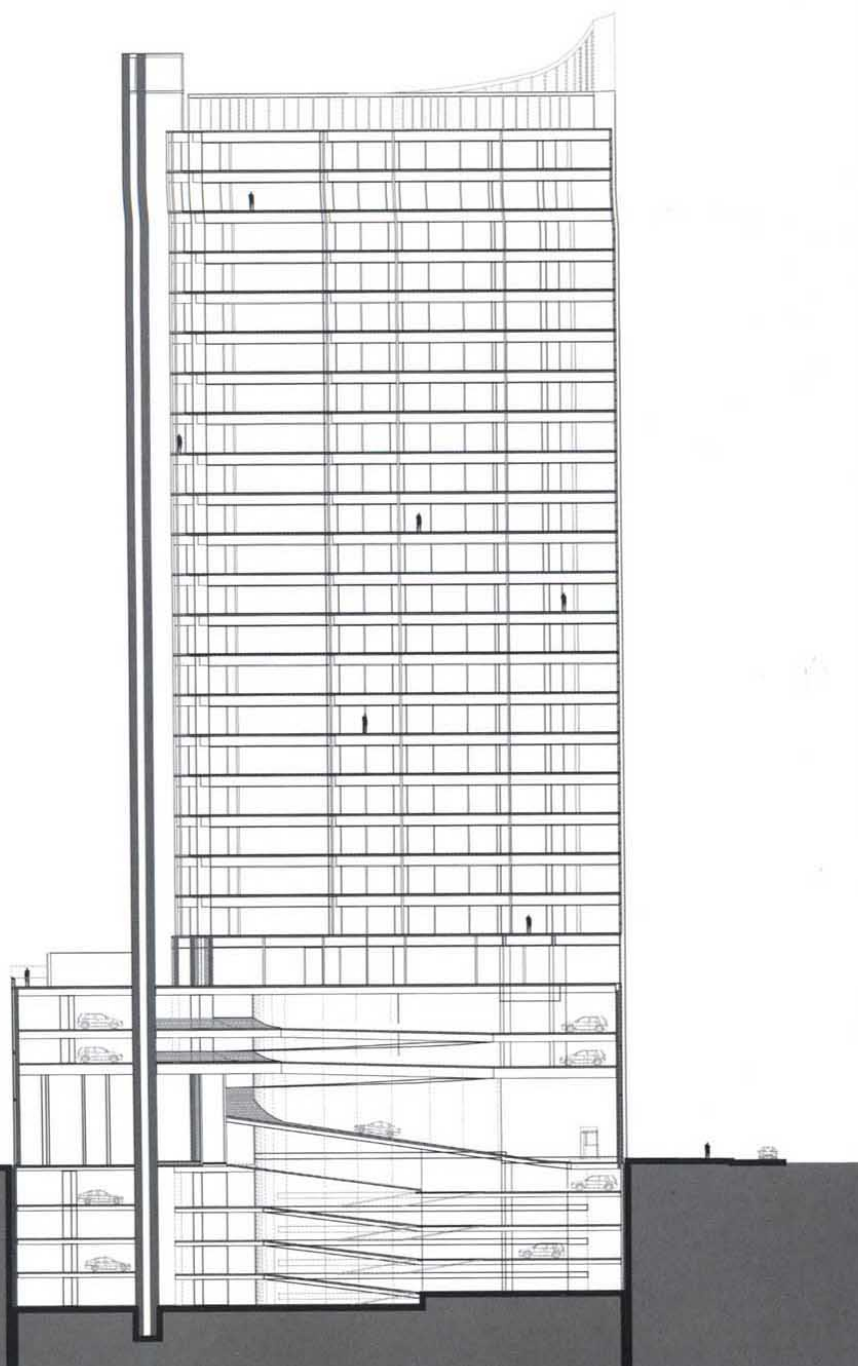
Architectural Features

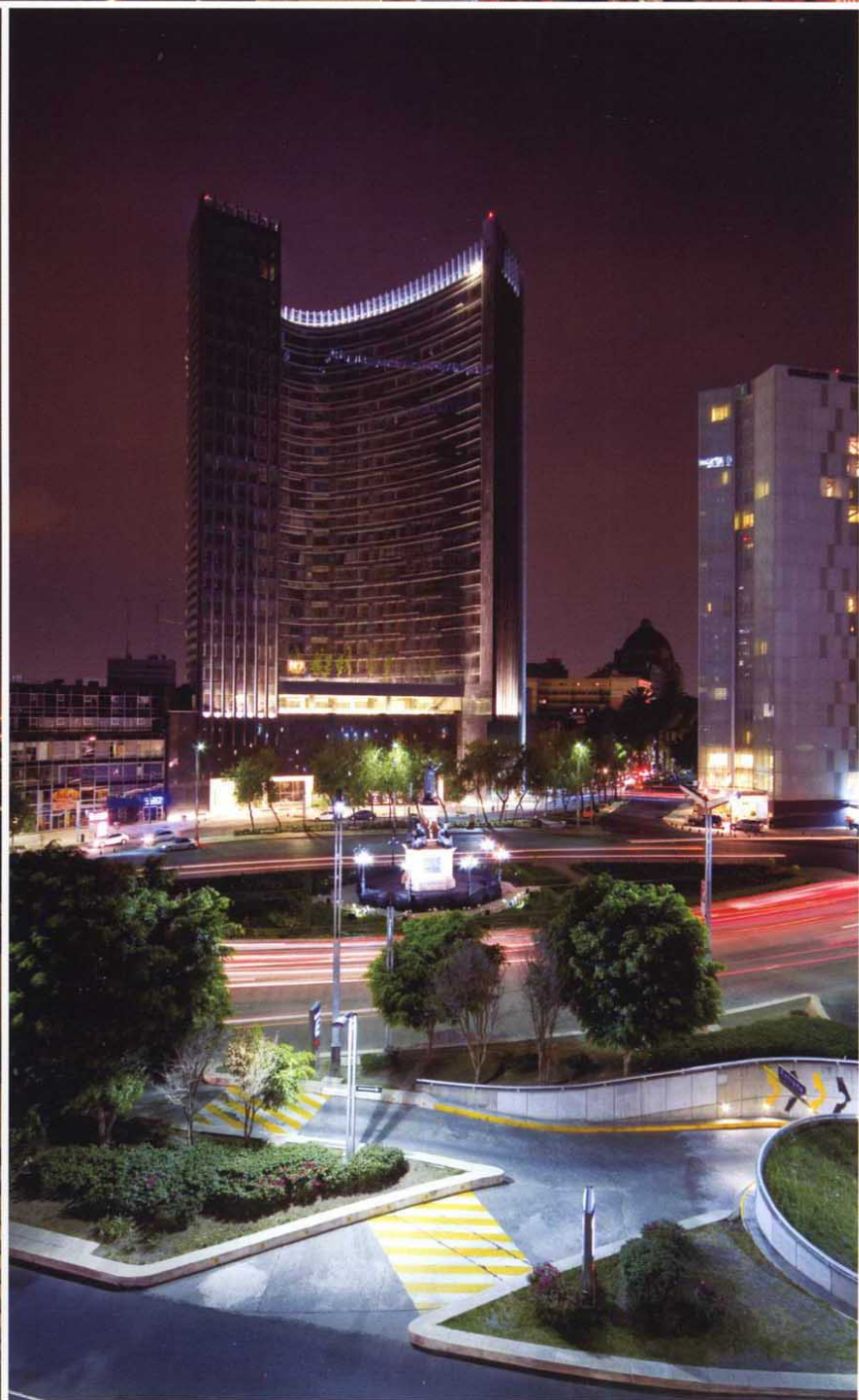
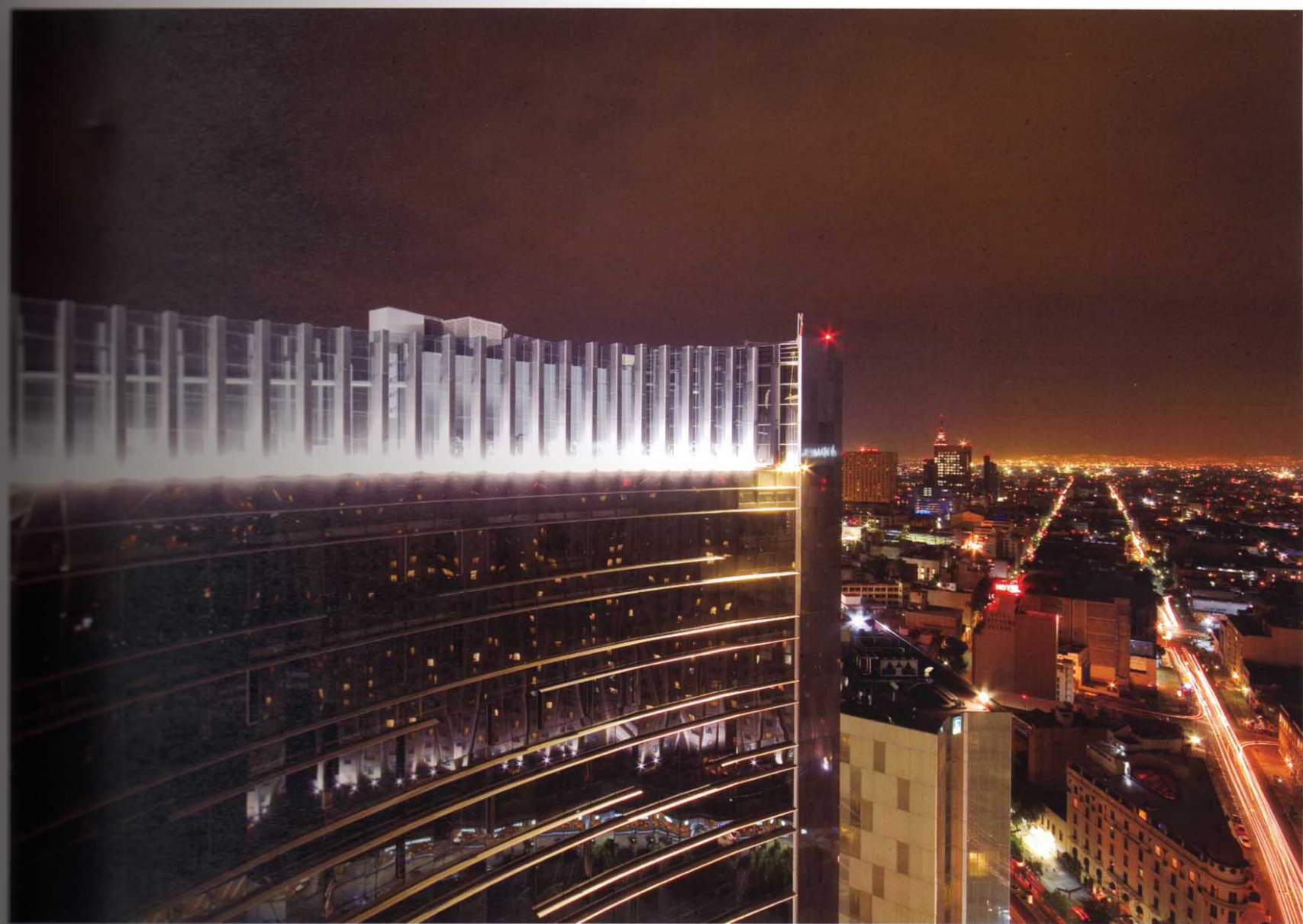
The building is an abstract entity giving a sense of scalelessness; its principal facade present itself as a smooth-skinned glass curtain, permitting, at a glance, the loss of perception of the building's floors. The building's skin is accentuated with randomly placed aluminum mullions, which control the effect of the sun, while creating an interesting effect of light and shadow in the concave shape.

Art is integrated into the Plaza Residences project by means of a raised mural plaza or "pisal", which, apart from being a common plaza, also serves as a transition towards the exterior, further favoring visual contact towards the great avenue.

The corners of the building emphasize its height with an abstract language by means of vertical elements which break the horizontality of the aluminum mullions. One of the vertical elements shifts position to move and converts itself with a group of columns and glass in a "box of light", giving presence to the building.













Site Plan



Site Plan