

Houses

designed for the country





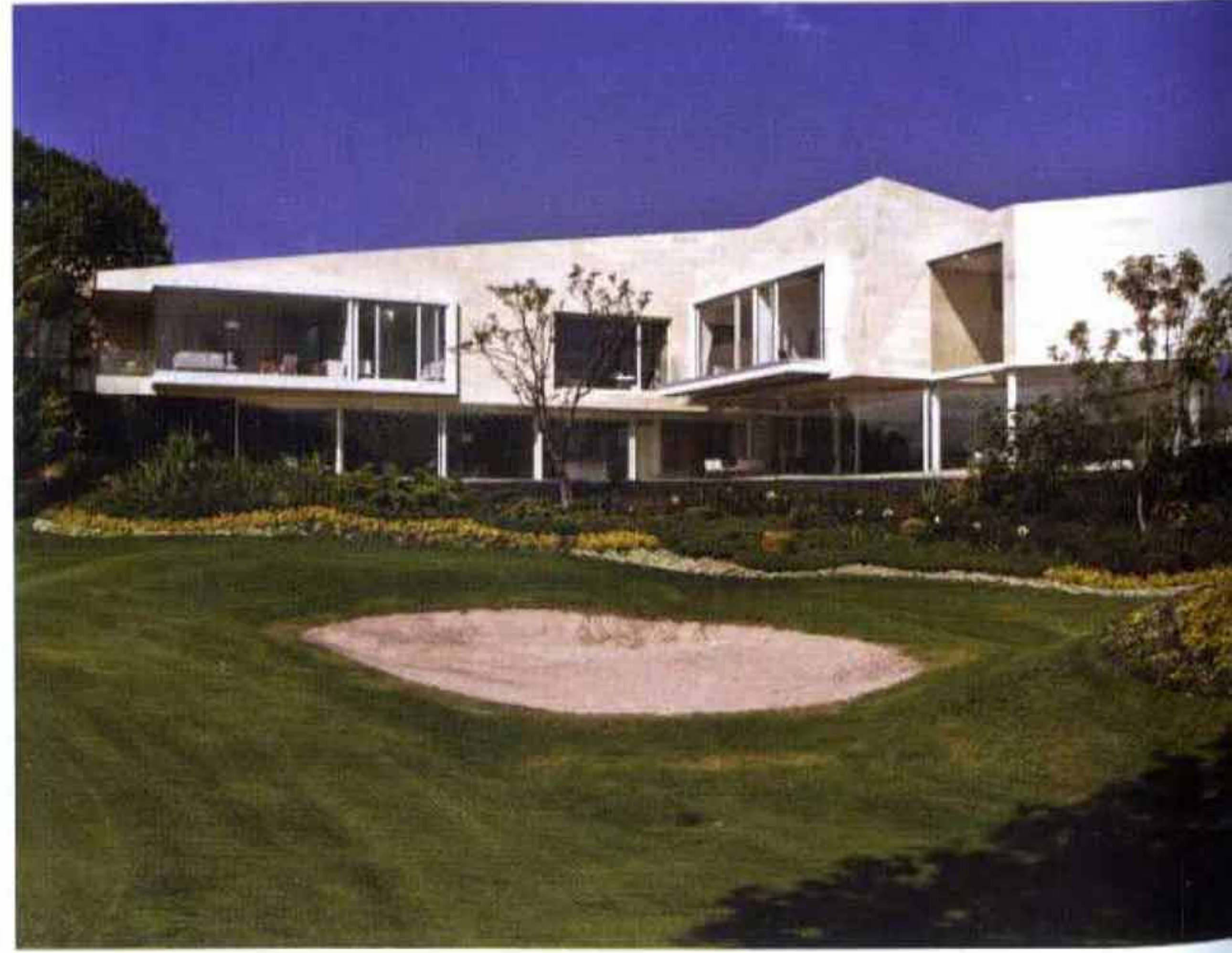
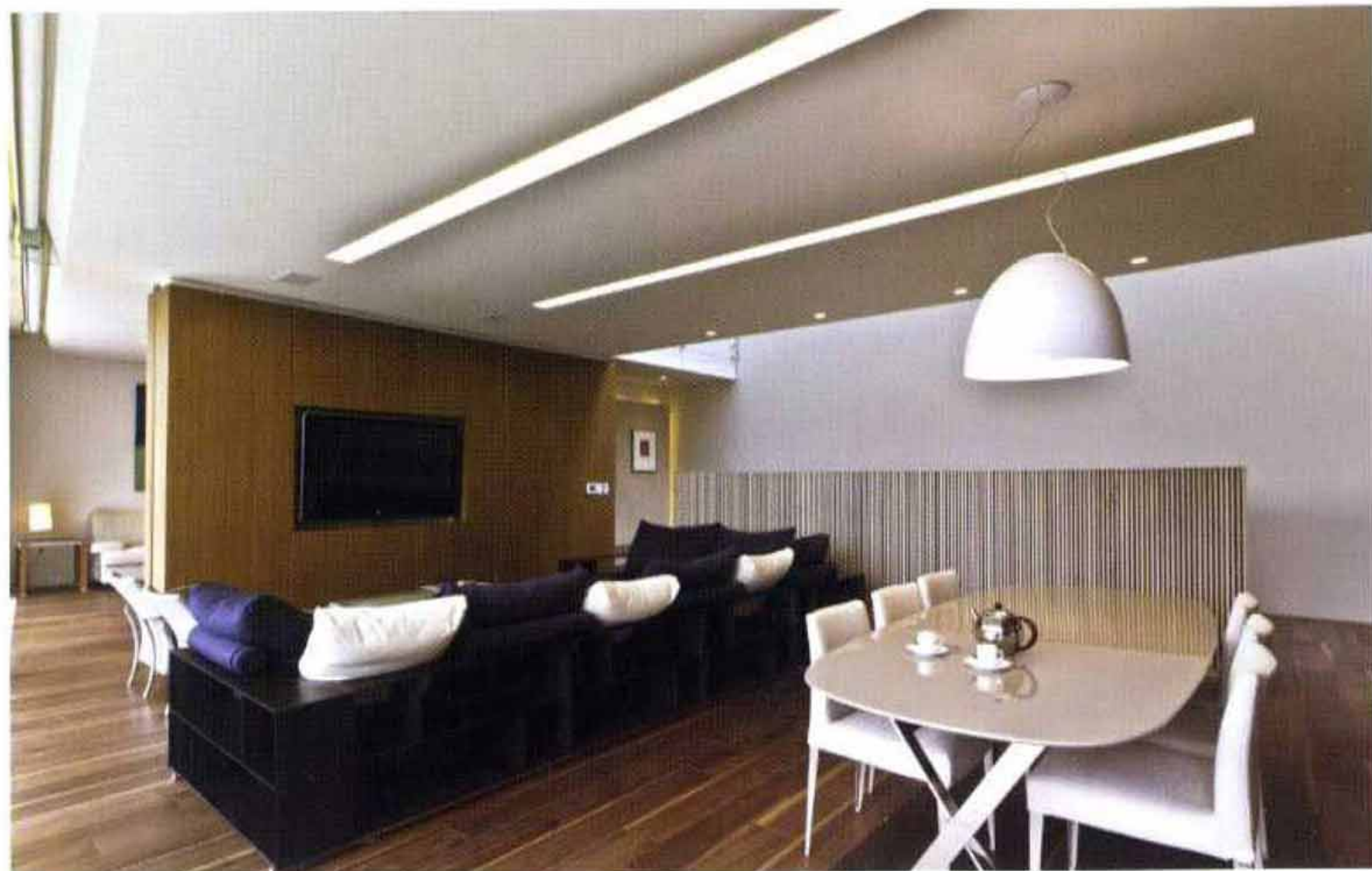
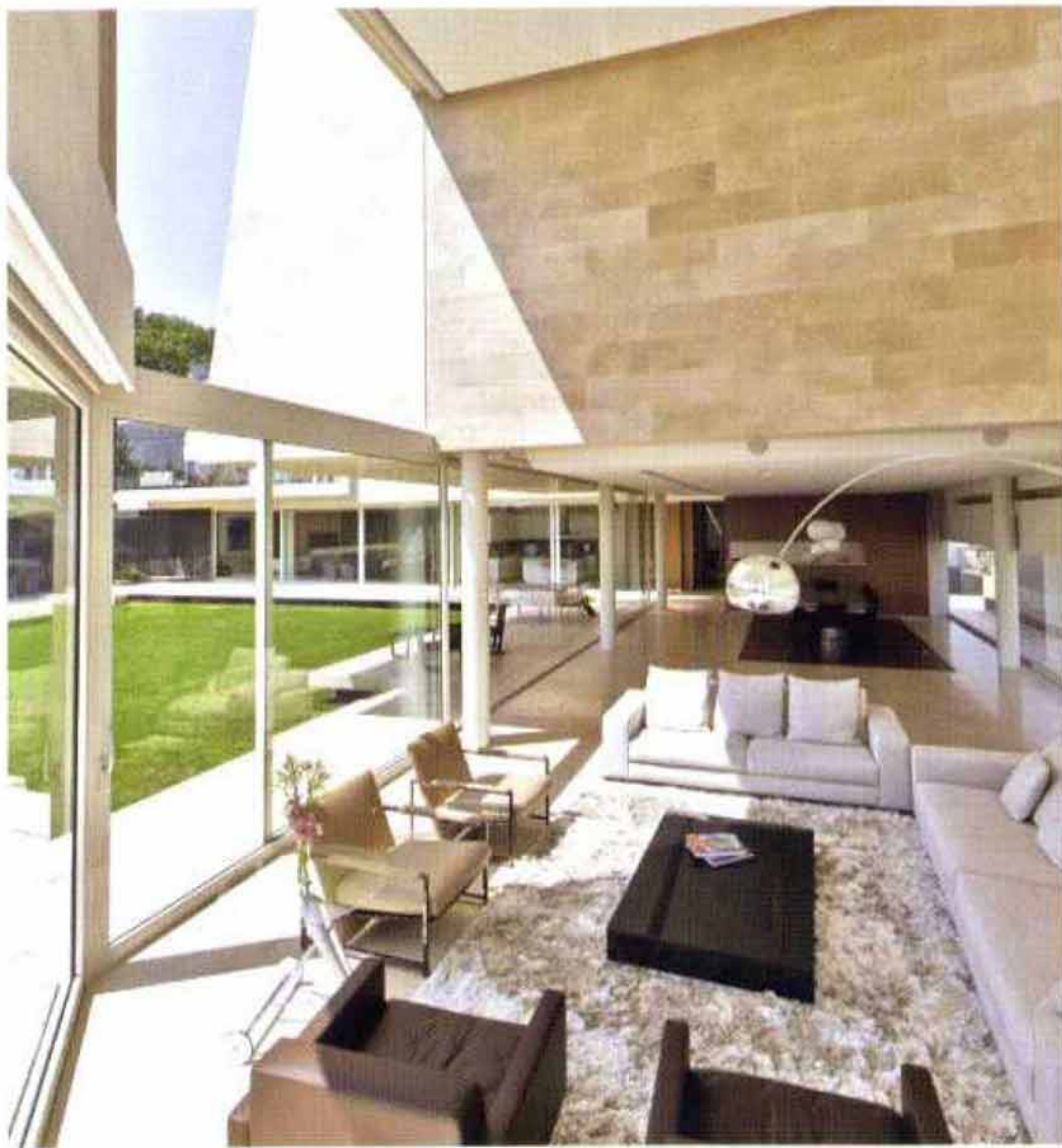
ABOUT: Migdal Arquitectos is a joint project development and construction firm led by principles Jaime Varon, Abraham Metta and Alex Metta. The company deals with a wide range of projects, both domestic and international, all supported by a group of professionals who are specialists in a range of disciplines.

Migdal Arquitectos believe that design has the power to enrich the urban environment. Their aim is to create architecture that surpasses traditional design, having addressed developments in social housing, middle and residential housing, office buildings, shopping centres, industrial parks, specialised buildings and a host of others. Migdal Arquitectos' transcendent projects become urban icons in the cities in which they are located.

Country Club Residence

Built beside a golf course in Mexico City, this gorgeous country club home utilises the striking view, a strong connection to the outdoors and a flood of natural light to achieve a striking effect from the façade. Internally, the layout is open and functional, allowing for comfortable modern living.





- Plaza
- Living Room
- Dining Room
- Breakfast
- Restroom
- Elevator
- Kitchen
- Central Atrium
- Family Room
- Guest Room
- Bathroom and Dresser
- Garden

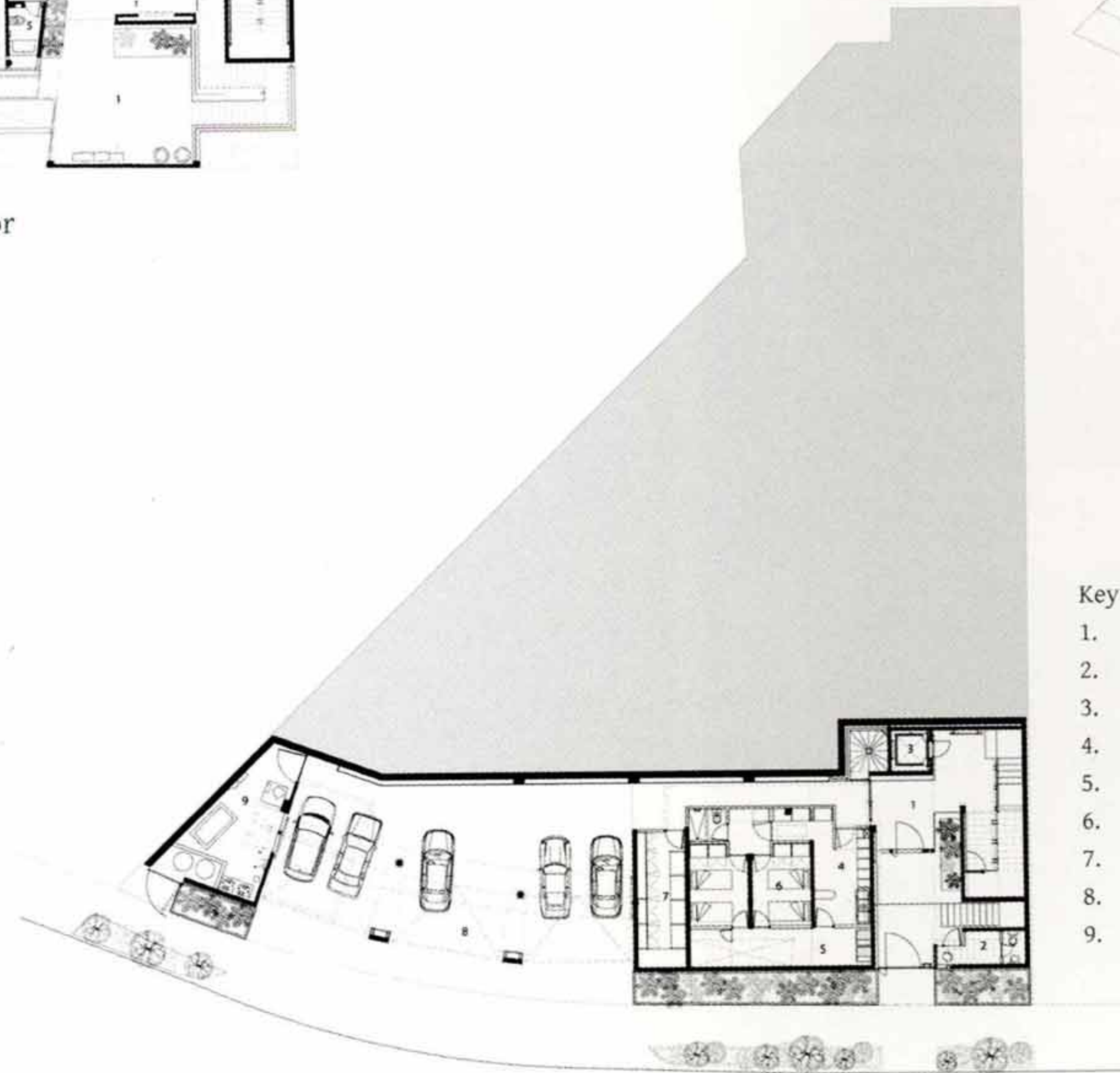


First Floor

- Key
- 1. Main Bedroom
 - 2. Bathroom
 - 3. Dresser
 - 4. Library
 - 5. Central Atrium
 - 6. Closet
 - 7. Elevator
 - 8. Terrace
 - 9. Bathroom and Dresser
 - 10. Second Bathroom
 - 11. Bathroom and Dresser
 - 12. Second Bedroom
 - 13. Terrace
 - 14. Tree Garden
 - 15. Terrace



Second Floor



Ground Floor

- Key
- 1. Access Lobby
 - 2. Surveillance
 - 3. Elevator
 - 4. Laundry Room
 - 5. Yard
 - 6. Service
 - 7. Stowage
 - 8. Garage
 - 9. Machine Room



The L-shaped residence adopts a southern orientation that respects the topography of the site. This arrangement permits all of the internal spaces to have visual access to the 'great garden' that surrounds the home, creating continuity between the house's exclusive green area and the nearby golf course.

Articulated over three storeys to make best use of the available space, the home comprises a services basement that appears from the outside to be a modern 'podium' made of black stone, with the rest of the residence resting atop it. The second layer comprises the public, transparent and 'light' spaces. With direct links to the main garden, these inviting, communal and transitional spaces are a joy to dwell within. The third storey meanwhile, supported by slender metal columns, accommodates the home's private zones and connects with the 'Tree Garden' - a final feature that preserves all the existing nature of the site.

The material palette in this design is limited, yet very effective. The façade is articulated in black stone, beige marble,

aluminium and glass, with the stone of the podium contrasting with the beige marble of the volume above, controlling views and creating a striking street presence.

From the ground floor, the house appears transparent and bright, with a connection formed with the outdoors through the extensive use of doors and terraces, creating an entirely continuous space.

Inside, the theme of the exterior design is brought to the interior, achieved by the continued use of the beige marble. The double height living space is an especially outstanding feature of the home. Wall to wall glazing in this room creates an open and tantalising daily living space. This is further defined by hanging walls that unfold from the ceiling, lending optional scale or confinement to the room as circumstances dictate.

Photography by Luis Gordo

Jaime Varon, Abraham Metta, Alex Metta / Migdal Arquitectos
Av. Prolongación Paseo de la Reforma 1236
piso 11, Col. Sta. Fé, Deleg. Cuajimalpa,
05348, México, D.F.
T: +52 55 9177 0177
www.migdal.com.mx